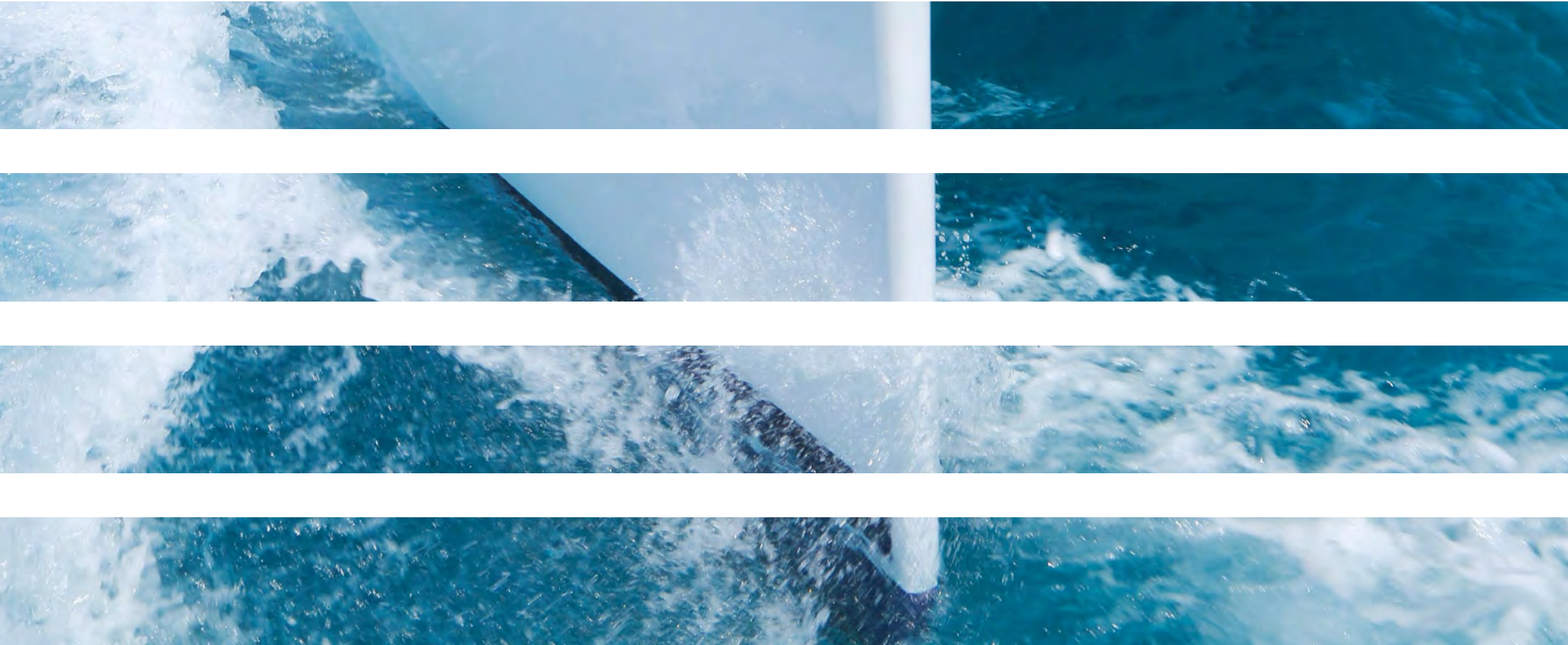




LEOPARD  
CATAMARANS



LEOPARD RANGE



## INDEX

01	Discover
03	Company History
05	Robertson & Caine
09	Leopard 40
13	Leopard 44
17	Leopard 48
21	Leopard 58
27	Leopard 51 Powercat
31	Contact Information & Office Locations
34	Testimonials
35	Social Media
36	Global Support





# DISCOVER

## The Leopard Leap

Performance, comfort, innovation, passion and elegance are not only tag words for the multiple award-winning Leopard Catamarans line, these are at the core of the design and ethos of the yachts, their designers, builders and global team.

From the initial designs to the manufacturing process, these concepts, and the direct feedback from our owners and customers, are at the heart of developing blue water cruising capable yachts that are fun to sail, easily maintained anywhere in the world and aesthetically pleasing.

Developing and delivering the benchmark for the modern cruising catamaran, Leopard Catamarans invites you to enjoy our latest designs.







# HISTORY

## The making of a Leopard

In 1994, South African builder Robertson & Caine entered the catamaran market and would change the seascape of catamaran production and design forever. Modestly starting by building 5 Leopard 45s for the world's premier charter company, the team at Robertson & Caine was pleased to find that the yachts were received with unparalleled fanfare.

The catamarans proved to be so successful that another order was placed for 5 more. In less than 4 years, Robertson & Caine delivered their 100th catamaran, and every single one was delivered to its final destination on its own bottom. What better maiden trip and better proof of blue water capability than an extensive delivery passage?

Due to market demand, the relationship expanded with the launch of Leopard Catamarans in the year 2000. Sailors were impressed with the new line of catamarans coming from the Robertson & Caine factories, and were interested in purchasing them for private use, making their own choice of layout, optional gear and delivery location.

In 2007 Leopard Catamarans ventured into the power catamaran market with the introduction of the Leopard 47 power catamaran. The incredible fuel efficiency of this model made the Leopard 47 PC an instant success.



Soon after, the Leopard 37 PC was introduced to satisfy demand for a smaller powercat, and in 2011 this model was replaced with the Leopard 39 PC.

In early 2012 the 1,000th Leopard catamaran was launched, further establishing Robertson & Caine's position in the catamaran market. Leopard Catamarans has made impressive steps and grown very fast over the past decade, becoming the industry's leader in the production and delivery of quality catamarans for private and charter fleets worldwide.

With a global dealership network spanning 6 continents and 20 plus countries, Leopard owners know that there is always support nearby for parts, expertise or advice.







# ROBERTSON & CAINE

## The Builders Behind the Boats

John Robertson and the late Jerry Caine founded Robertson & Caine LTD, South Africa's largest boat builder, in 1991. With over 20 years of boat building history, they have launched over 1,200 Leopard Catamarans and created a reputation for building quality cruising catamarans that are sought after worldwide.

Originally, the company created custom sailing yachts, ranging from 36ft fiberglass monohulls to 70ft state-of-the-art carbon fiber racing boats. The latest innovative offerings include the Leopard 40, Leopard 44, Leopard 48, Leopard 58, Leopard 51 Powercat and the new project of Robertson & Caine, the Leopard 43 Powercat.

These models are destined for the world's most exotic sailing grounds, including the US East Coast, the Caribbean, the Seychelles, the Mediterranean, Asia and the South Pacific.

As a result of continued innovation and quality, Robertson & Caine remains a serious competitor in the international catamaran market and continues to enjoy a dominant position in the North American market.



Robertson & Caine's Leopard Catamarans is the #1 selling brand of catamaran in North America and continues to impress with modern pioneering, while staying true to the classic feel and elegance that the Leopard range has always offered.

Robertson & Caine's production facility is headquartered in Woodstock, just a short distance from the Cape Town city center and harbor. The company is currently producing and launching approximately five boats a week and there are several new exciting projects currently in the pipeline.





## SAILING CATAMARANS



LEOPARD | 40



LEOPARD | 44



LEOPARD | 48



LEOPARD | 58





# LEOPARD | 40

Designer/Builders Robertson & Caine and Naval Architects Simonis-Voogd have set a new standard for contemporary cruising catamarans with the launch of the new Leopard 40. The innovative interior layout, increased volume in the hulls, and expanded windows and doors that blur the lines between inside and out combine to make the interior space feel like a larger yacht.

The unique forward-facing galley stands in front of a large window with an adjacent access door to the forward platform. Aft, a forward-facing settee and dining table are separated from the aft cockpit seating area by sliding glass doors.

These doors and windows enhance the open-concept feel, allow for exceptional ventilation, and facilitate easy navigation in and around the yacht.

The raised helm station is accessible from the cockpit and side deck, allowing for easy shorthanded sailing and keeping the helmsman close to family and friends. With more than 1000 sq. ft of sail area and an optimized hull design, like all Leopard catamarans, the Leopard 40 is built to a high standard of speed and agility.



LEOPARD

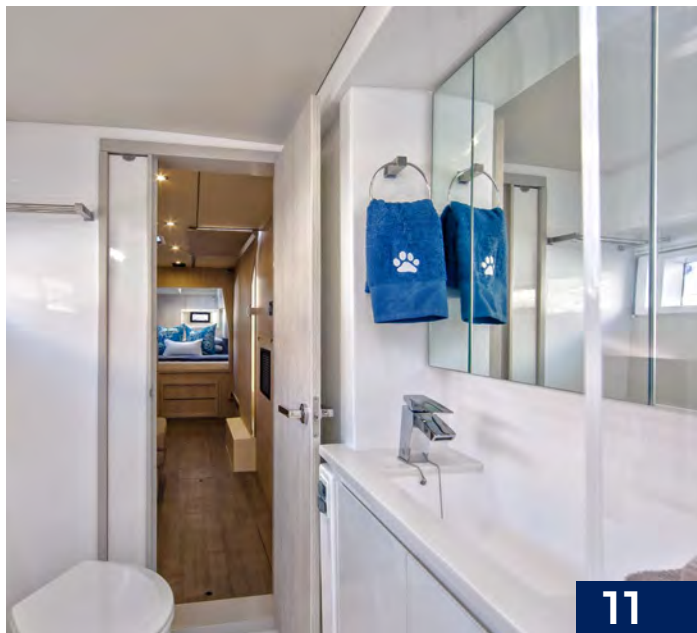
40

PERFORMANCE | COMFORT | ELEGANCE | INNOVATION | ASTUTE



Length Overall:	11.99 m / 39 ft 4 in
Length Waterline:	11.62 m / 38 ft 1 in
Mast Height:	19.45 m / 63 ft 10 in
Beam:	6.72 m / 22 ft 1 in
Draft:	1.25 m / 4 ft 1 in

Displacement:	9,340 kg / 20,591 lbs
Fuel Capacity:	360 L / 95 gal
Water Capacity:	780 L / 206 gal
Sail Area:	95.9 sq. m / 1,032 sq ft
Engines:	2 x 29 hp







# LEOPARD | 44

With Leopard 44s sailing in all corners of the world and hundreds of trans ocean crossings completed, it is clear that this blue water cruising catamaran has lived up to the awards and praise that it has received. This yacht incorporates many of the design aspects of the Leopard 39 while featuring other successful concepts not seen before on production catamarans.

One of the many intriguing features this yacht offers is the forward cockpit with direct access from the saloon. While a forward cockpit is conventional on the modern cruising catamaran, the Leopard 44 distinctively offers an integral

hardtop bimini, protecting the forward and aft cockpits and creating a comfortable variety of outdoor living areas.

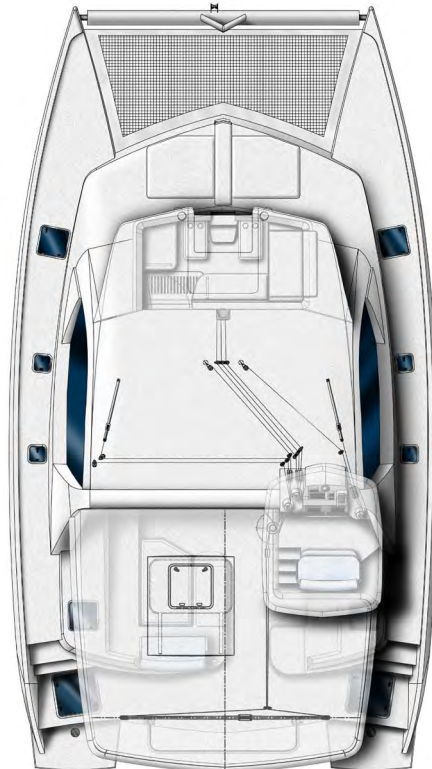
While the forward cockpit received much attention, it was the sailing performance and ease of handling that earned the Leopard 44 multiple awards. All running rigging runs aft to the standard electric winch, allowing this yacht to be sailed from the comfort and safety of the protected helm station with double helm seat and hardtop bimini.



LEOPARD

44

PERFORMANCE | COMFORT | ELEGANCE | INNOVATION | ASTUTE



Length Overall: 12.98 m / 42 ft 7 in

Length Waterline: 12.70 m / 41 ft 8 in

Mast Height: 20.88 m / 68 ft 6 in

Beam: 7.25 m / 23 ft 9 in

Draft: 1.27 m / 4 ft 2 in

Displacement: 12,615 kg / 27,880 lbs

Fuel Capacity: 700 L / 185 gal

Water Capacity: 780 L / 206 gal

Sail Area: 123 sq. m / 1,323 sq. ft

Engines: 2 x 29 hp







# LEOPARD | 48

Leopard Catamarans is excited and proud to introduce the award-winning Leopard 48. Focused on blue water performance and comfortable living, the Leopard 48 is a welcome addition to the award winning Leopard line.

From the design table and factory floor of the catamaran industry's leading manufacturer, the Leopard 48 comes with the pedigree sailors have come to expect from Leopard Catamarans.

Her modern lines, open floor plan and casual elegance set a new standard for the modern cruising catamaran.

Drawing on the success of the Leopard 44, the Leopard 48 features a large forward cockpit with direct access from the saloon and foredeck. The raised helm station with easy access to the cockpit and side deck allows for shorthanded sailing while not separating the helmsman from family and friends.



LEOPARD

48

PERFORMANCE | COMFORT | ELEGANCE | INNOVATION | ASTUTE



Length Overall:	14.75 m / 48 ft 5 in
Length Waterline:	13.85 m / 45 ft 5 in
Mast Height:	22.80 m / 74 ft 10 in
Beam:	7.64 m / 25 ft
Draft:	1.47 m / 4 ft 10 in

Displacement:	17,000 kg / 37,480 lbs
Fuel Capacity:	700 L / 185 gal
Water Capacity:	780 L / 206 gal
Sail Area:	144.5 sq m / 1,555 sq ft
Engines:	2 x 39 hp







# LEOPARD | 58

---

Leopard Catamarans is excited to introduce the new flagship of the Leopard line, the Leopard 58. Expertly crafted by world renowned Robertson & Caine, the Leopard 58 stays true to Leopard Catamarans' sleek and innovative style.

This luxurious catamaran offers the option of 2 to 6 cabins, and like the award winning Leopard 44 and Leopard 48, the Leopard 58 features a unique forward cockpit. Another intriguing feature of the Leopard 58 is the expansive flybridge with seating for up to 10 people.

The flybridge, the aft deck and forward cockpit are all covered in composite teak decking, a light weight high impact simulated teak. The large open aft deck offers ample space for alfresco dining or lounging.





More layouts available on request

Length Overall:	17.56 m / 57 ft 7 in
Length Waterline:	16.50 m / 54 ft 2 in
Mast Height:	27.50 m / 90 ft 3 in
Beam:	8.45 m / 27 ft 9 in
Draft:	1.83 m / 6 ft

Displacement:	28,000 kg / 61,730 lbs
Fuel Capacity:	900 L / 238 gal
Water Capacity:	1,560 L / 412 gal
Sail Area:	187 sq. m / 2,010 sq. ft
Engines:	2 x 75 hp







## POWER CATAMARANS

COMING SOON



LEOPARD  
POWERCAT | 43



LEOPARD  
POWERCAT | 51





# LEOPARD

P O W E R C A T

# 51

The Leopard 51 Powercat, the flagship of the power fleet, brings with it a multitude of exciting features, including a sleek design, a large forward cockpit, additional lounging areas, an expansive flybridge and a new interior upgraded with modern appliances.

She also incorporates a brilliant ergonomic layout that makes maneuvering around the power yacht comfortable and easy.

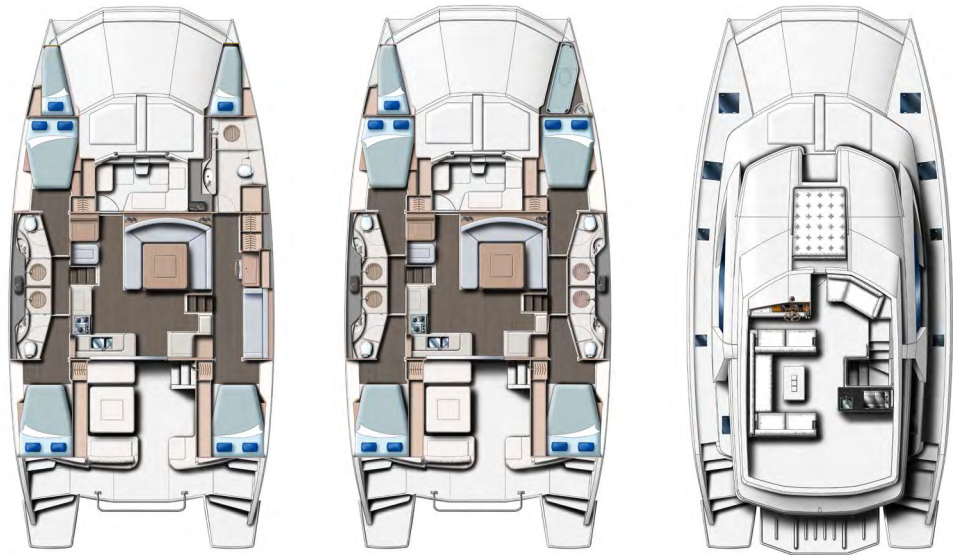
The Leopard 51 PC's interior has been completely redesigned. This design includes upgraded features introducing new materials used for flooring and cabinetry, and incorporates a new and refreshing modern look.



LEOPARD  
POWERCAT

51

PERFORMANCE | COMFORT | ELEGANCE | INNOVATION | ASTUTE



Length Overall:	15.54 m / 51 ft
Length Waterline:	14.96 m / 49 ft 1 in
Beam:	7.64 m / 25 ft 1 in
Draft:	0.980 m / 3 ft 2.6 in

Displacement:	18,500 kg / 40,785 lbs
Fuel Capacity:	1,500 L / 396 gal
Water Capacity:	780 L / 206 gal
Engines:	2 x 370 hp







## CONTACT & LOCATIONS

### Regional Headquarters

#### North America

##### South Florida Office

📍 850 NE 3rd Street, Suite 201  
Dania Beach, FL 33004

📞 +1-954-925-8050

📠 +1-954-925-4229

✉️ info@leopardcatamarans.com

#### Asia

##### Hong Kong Office

📍 G/F Shop, 168 Che Keng Tuk  
Road - Sai Kung, N.T.  
Hong Kong S.A.R., China

📞 +852 6384 0188

✉️ asia@leopardcatamarans.com

#### Africa

##### Cape Town Office

📍 2nd Floor Marina Centre, Lobby 1  
West Quay Road, V&A Waterfront  
Cape Town 8001, South Africa

📞 +27 21 200 1825

✉️ southafrica@leopardcatamarans.com

#### Europe

##### Nice Office

📍 10-12 Quai Papacino  
06300, Nice, France

📞 +33 (0) 4 92 00 09 03

📠 +33 (0) 4 92 04 85 10

✉️ europe@leopardcatamarans.com



## LEOPARD TESTIMONIALS

“

“The Leopard catamaran we purchased has been a rewarding and fulfilling experience on all accounts. All the joys of physically owning and using the yacht have been great, but what has also been very rich and meaningful is to be part of the outstanding group of professionals at Leopard Catamarans. We are very happy with our yacht and the friends that we have at Leopard Catamarans”.

*Allen & Patricia Valkie, “Nauti-Nauti”*

”

“

“Robust build and clever design are hallmarks of the range, and over the years each new model has featured a number of smart and sometimes downright innovative ideas and refinements... It’s not easy to give a loaded cruising cat satisfying sailing performance, but the designers are known for their fast-sailing boats and the 44 is as sprightly as such cats get”.

*Peter Nielsen, SAIL Magazine Best Boats 2012*

”

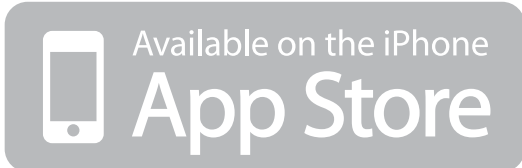


# CONNECT

Bringing the Leopard Home

Staying connected with the Leopard family has never been easier with the new Leopard Application for iPhone, iPad and Android. These apps connect you to virtual tours, brochures, images and so much more!

You can also stay in touch with Leopard via Facebook and Google+. Keep up-to-date with all of the latest information on Leopard Catamarans!



# GLOBAL SUPPORT NETWORK



Wherever you and your Leopard are in the world, you will find a Leopard support team close to you. Also, take comfort in the fact that there are 35 worldwide Moorings and Sunsail bases with support teams ready and available for you and your new Leopard.



# NOTES

---







**LEOPARD**  
CATAMARANS

---

[www.leopardcatamarans.com](http://www.leopardcatamarans.com)