

*Economical • Spacious • Efficient • Global • Intelligent*



LE<sup>PAW</sup>ARD<sup>39</sup> POWERCAT



*Leopard 39 Powercat*



# Introducing

*The Leopard 39 Powercat is an innovative, efficient and spacious yacht that takes the best features from the popular Leopard 47 Powercat to bring you an exciting midsize catamaran with many of the features of a much larger yacht.*

*With a vision of creating an economical and intelligently designed power catamaran with global cruising capabilities, the team of award winning designers at Robertson and Caine not only drew upon the success of previous models, but also learned from feedback of our global owners and cruisers.*



*Features on the Leopard 39 include a spacious raised flybridge with helm station and hard top, three cabin interior layout, full galley and saloon, plus an open cockpit.*

*With a history of building off successful designs and adapting functionality based on consumer feedback, Leopard Catamaran is, and will continue to be, the benchmark of excellence for the next generations of power cats.*





*The Leopard 39 Powercat offers exterior living space unparalleled in its class. As you step onto the yacht from its open transom, you will enjoy a large covered cockpit. This area features a molded dining table and comfortable seating for up to eight guests with built-in storage lockers.*

*The entire aft section of the single level cockpit may be configured as a separate socializing area, with a rear seat back that allows you to face fore or aft.*

*The available stainless steel davit features an electric winch for ease of storing and launching your dinghy, keeping your transom and swim platforms clear.*



*A curved molded staircase with stainless steel handrail takes you to the flybridge, featuring wrap around seating with padded backrest and a functional cocktail table. Moving aft is a full helm station with large bench seat and a continuous stainless steel handrail. A hardtop cover with optional solar panels offers protection from the elements and can be fully enclosed.*

*The spacious uncluttered foredeck, perfect for sunbathing and lounging, is easily accessed from the cockpit via wide side decks framed by a continuous stainless steel handrail. Also featured on the forward deck are large built in lockers with an enclosed electric anchor windlass with hand held remote control. Large, elliptical windows and vertical forward facing windscreens stay true to the Leopard design and give the exterior sleek and distinguished aesthetics.*



# *Leopard 39 Powercat*

# *Exterior*







*Leopard 39 Powercat*

# Interior



*Soft overhead lighting and a rich cherry wood finish throughout give a remarkably spacious appearance to the Leopard 39 interior. Corian surfaces in the galley and micro-fibre fabrics in the saloon add a luxurious feel with proven and durable materials. Interior color options are available.*

*Large windows provide panoramic views and allow natural light into the saloon while large opening hatches afford ample ventilation.*







*The spacious saloon of the Leopard 39 Powercat features an aft-facing galley-up design. The galley layout features soft curves and heat-resistant Corian counter tops. Fully equipped with a standard stainless steel stove with oven and broiler, a deep sink with mixer tap and ample counter and cabinet space, this galley is ergonomic and practical.*

*To starboard, a large refrigerator-freezer system, with well-insulated and stylish drawer opening compartments and stainless steel faces and handles provide ample storage for your provisions.*



*The wide U-shaped settee comfortably accommodates eight guests. The optional convertible table allows you to transform your large dining table into a smaller coffee or dining table as well as an additional double berth.*

*The electrical panel, VHF and sound system controls are conveniently located just inside the companionway doors to starboard for ease of access from the saloon, cockpit and helm station.*



# *Leopard 39 Powercat*



# *Saloon and Galley*





*Leopard 39 Powercat*



# Accommodations

*The Leopard 39 is available in a luxurious three cabin owner layout. Two guest cabins are located in the port hull with a shared central head and stall shower.*

*Well ventilated with opening hatches and ports, the cabins offer plenty of storage and excellent lighting. Adjustable reading lights, full size hanging lockers and shelving add to the practicality and comfort of this area.*

*The starboard hull is dedicated to the stylish owner's suite with a spacious master cabin and private head with large stall shower forward. Amenities include washbasin with mixer tap, shower with adjustable shower head, Corian vanity unit and marine toilet.*



*Located aft, the master stateroom features a large double berth, book shelf, adjustable reading lights, hanging locker, plenty of shelving for clothing and personal items, as well as additional storage under the bunk. Two opening hatches and two opening ports provide excellent ventilation.*

*The master suite incorporates a separate study area with dedicated desk, overhead lighting and an optional swing seat.*





*Powered by two inboard diesels with several engine choices and coupled with an efficient hull design, the Leopard 39 Powercat offers exceptional fuel efficiency and range.*

*The innovative stepped hull design increases volume while minimizing the wetted hull surface, giving exceptional load carrying capacity and ensuring optimal performance.*

*The helm station is fitted with an electronic double lever throttle, Tridata display, depth & speed gauge via GPS, and autopilot control. This area also features a handheld VHF radio with loud speaker plus a second handset & speaker at the salon electrical panel.*



*The stainless steel davit features an electric winch for ease of storing and deploying a dinghy while creating additional space on the transom and saving valuable weight astern.*

*The extended stepped transom provides additional usable space for water sports and easy boarding from the water or the dinghy.*



# *Leopard 39 Powercat*



# *Power and Performance*



## LEOPARD 39 POWERCAT STANDARD SPECIFICATIONS

Length overall	38 ft 7 in.	11.75 m
Waterline length	36 ft 10 in.	11.23 m
Beam	19 ft 9 in.	6.04 m
Draft	3 ft 3 in.	0.985 m
Displacement	22,000 lb	9,955 kg
Water capacity	206 US gal.	780 l
Fuel capacity	211 US gal.	800 l
Engines x 2	110 hp	

Leopard Catamarans boast blue water capability, great performance, solid construction, excellent ventilation, high quality equipment, large tank capacities, hard top bimini, spacious flybridge, at an excellent value.

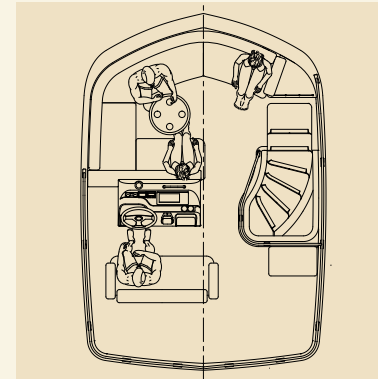
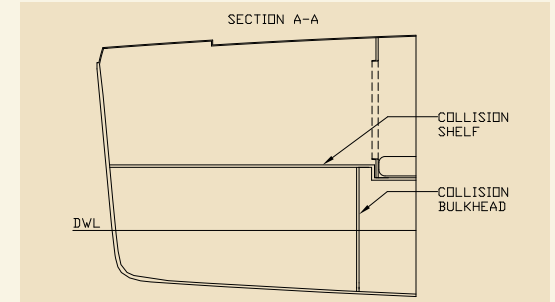
The standard equipment can be enhanced by a range of quality optional items including generator, air conditioning, watermaker and much more. Call for details.

Robertson and Caine uses advanced composite GRP sandwich construction. A vacuum bonded E-glass end-grained balsa cored hull ensures a precise resin to glass ratio, and is highly compression and impact resistant. E-glass stitched fabric delivers maximum strength.

Isophthalic gelcoat and resin rich tissue helps prevent osmosis. The hull laminate is light and durable resulting in a dynamic weight carrying capacity and excellent motion reaction of the hull.

### Bulkhead:

The collision bulkheads prevent water intrusion in case of damage to the bows.



### Flybridge:

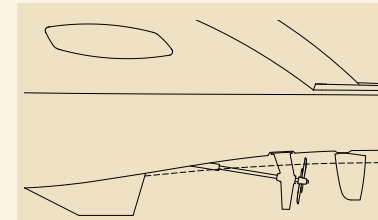
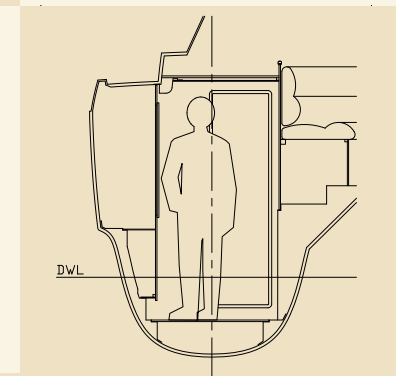
Centralised helm position provides great visibility on all corners for ease of maneuvers.

Cushioned bench seating for up to eight passengers.

Wet bar with single lever faucet and cooler compartment.

### Hull Chine:

Increases interior volume without compromising hull shape and minimizes wetted surface for more speed. Water is deflected away from the hull thus keeping deck drier, while the radiused chine intersection reduces slapping.



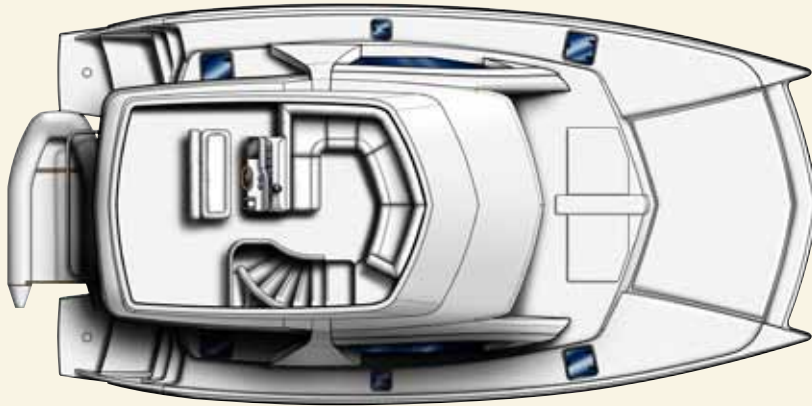
The concave in the aft sections of the hulls around the props allows a shallower shaft angle, reducing water disturbance and prop wash, resulting in a superior and more efficient thrust to the propellers, a shallower draft and better protection of the shaft.

# Leopard 39 Powercat



# Specifications

*FLYBRIDGE*



*THREE CABIN LAYOUT*



*MAIN DECK*



*FOUR CABIN LAYOUT*





LE<sup>PAW</sup>ARD  
CATAMARANS  
[www.leopardcatamarans.com](http://www.leopardcatamarans.com)